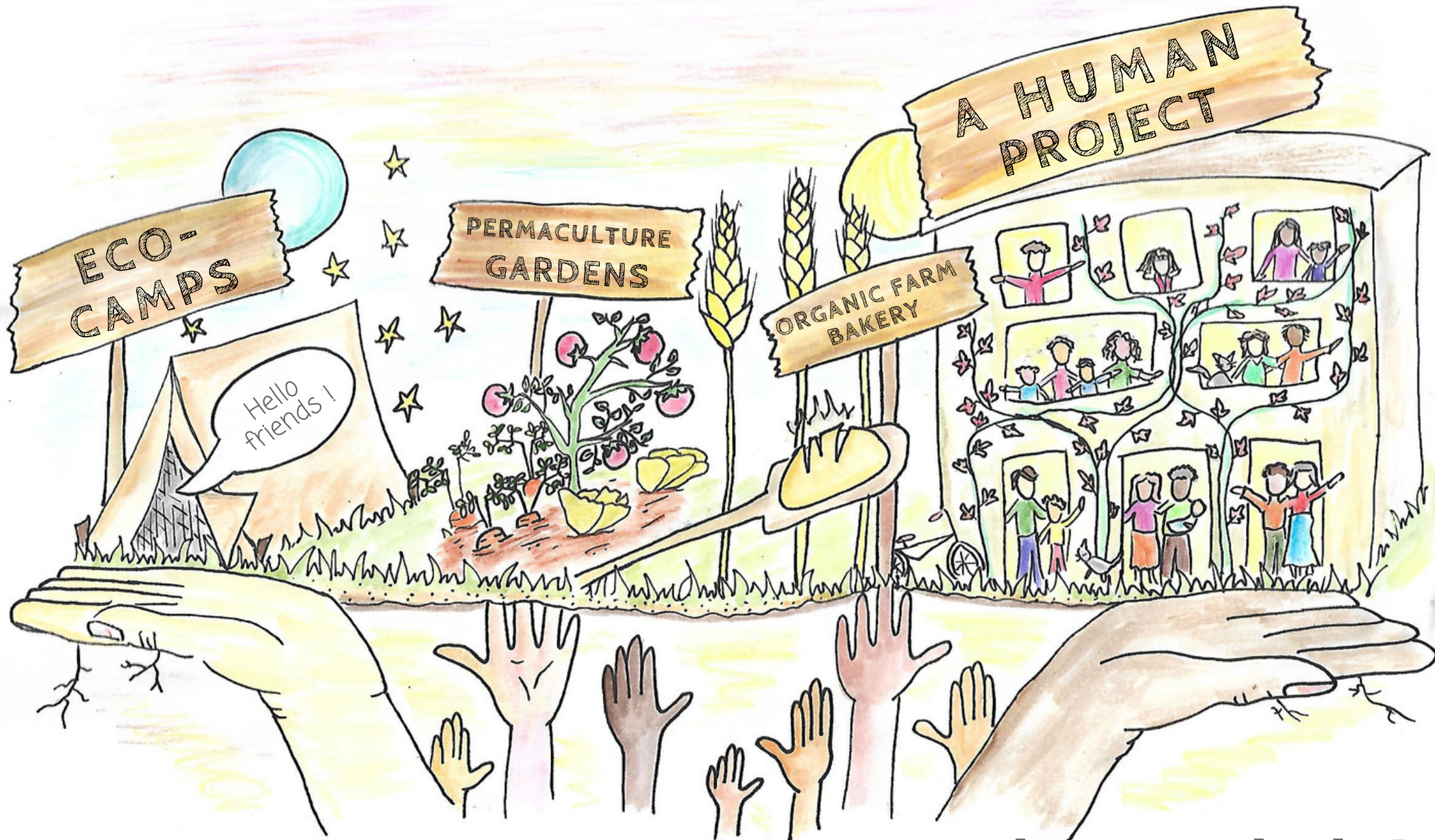


# The GRAIN&SENS eco-community...



... needs your help!





*The Grain&Sens eco-community is creating "A place to live and to share, which nourishes the earth, it's beings, and their consciences".*

*With a great openness to the world and a strong link with the environment, the project residents have spent 2 years bringing this project to life, and since March 2018, have been running activities at Domaine de Lavenant in Boffres, Ardèche.*

## PARTICIPATE IN THE FUNDING OF THE ECO-COMMUNITY

**1. Personal Investments:** Invest some of your savings in a project that makes sense to you

**2. Donations:** Directly support the launch of the community activities

**3. Timeshare:** Give yourself a WE / a week a year, staying in the on-site B&B, with a pre-purchase discount

### An ethical gesture of financial

**solidarity:** Cooperation and community is the core of this project, including the financing aspect. We offer an opportunity to reinvent the relationship between money and ethics, and transition from an unsustainable system towards a collaborative and sustainable financing model that benefits all. Offering shared funding for this project allows a wider community to understand what influence their investments can have, showing solidarity and hope.

**Objective:** Your financial help allows this collective project to purchase the site and run activities including eco-camps, immersion in English, an organic farmer-bakery, courses in wellbeing, permaculture gardens, and many other steps towards an even better world. We believe in community cooperation, and are offering you the opportunity to give your money back its power of ethical solidarity.